

# GROVE®

## GMK5275 ■



### features

- 44 - 223 ft. (13.3 - 68 m) 7 section full power Mega Form boom with Twin Lock pinning
- 39 - 69 ft. (12 - 21 m) hydraulic offset bi-fold swingaway
- 2 x 26 ft. (8 m) intermediate lattice inserts
- 169,700 lb. (77 t) counterweight with hydraulic removal system
- MEGATRAK independent hydro-pneumatic suspension



*Preliminary*

All Terrain Crane



# Superstructure Specifications – North American Version

## Boom

44 ft. - 223 ft. (13.3 m - 68 m) 7 section, full power Mega Form boom with **Twin Lock Pinning**.  
Maximum tip height: 233 ft. (71 m)

## Boom Nose

Eight nylatron sheaves, mounted on heavy duty tapered roller bearings with removable pin-type rope guards. Quick reeve boom nose. Removable auxiliary boom nose with removable pin type rope guard.

## Boom Elevation

Single lift cylinder with safety valve provides boom angle from -1.5° to +83°.

## Hydraulic Offsettable Lattice Extension

39 ft. – 69 ft. (12 - 21 m) bi-fold lattice swingaway extension, hydraulically offsettable and luffing under load, 5°- 40°.

Maximum tip height: 292 ft (89 m)

## Lattice Inserts

2 x 26 ft. (8 m) inserts for use with lattice swingaway extension to increase length to 95 ft. (29 m) or 121 ft. (37 m)

Maximum tip height: 354 ft (107.7 m)

## Load Moment & Anti-Two Block System

Load moment and anti-two block system with audio/visual warning and control lever lockout provides electronic display of boom angle, length, radius, tip height, relative load moment, maximum permissible load, load indication and warning of impending two-block condition.

## Cab

All aluminum constructed cab with acoustical lining, **hydraulic tilted** to 20°. Includes tinted safety glass, adjustable operator's seat with hydraulic suspension, opening windows at side and rear, hinged windshield with wiper, sun visor and window shade. Other features include hot water heater/defroster, armrest integrated crane controls and ergonomically arranged instrumentation.

## Swing

3 planetary gear boxes with fixed displacement axial piston motors. Infinitely variable to 1.3 rpm. Free swing or hydrostatically engaged brake controlled by swing lever. Swing brake selected by foot operated switch.

## Counterweight

169,700 lbs. (77 t) consisting of various sections with hydraulic installation/removal system controlled from the superstructure cab.

## Engine

Cummins QSB6.7, 6 cylinder  
Horsepower: 220 bhp (164 kW) at 2200 rpm  
Torque: 700 ft./lb. (949 Nm) at 1500 rpm  
Off-road: EPA/CARB/EUROMOT (III)

## Fuel Tank Capacity

61 gal. (230 l)

## Electrical System

3 phase alternator: 28V/80A  
2 batteries: 12V/170Ah

## Hydraulic System

3 separate circuits, 1 axial piston variable displacement pump (load sensing) with electronic power limiting control for crane functions and 2 gear pumps for swing and outrigger functions. Thermostatically controlled oil coolers keep oil at optimum operating temperature. Hydraulic tank capacity: 242 gal. (915 l)

## Hoist

Main and auxiliary hoist are powered by axial piston motor with planetary gear and brake. "Thumb-thumper" hoist drum rotation indicator alerts operator of hoist movement.

	<b>Main</b>	<b>Auxiliary</b>
Rope length:	951 ft. (290 m)	951 ft. (290 m)
Rope diameter:	22 mm	22 mm
Line speed:	410 ft./min. (125 m/min)	410 ft./min. (125 m/min)
Line pull:	21,020 lbs. (93.5 kN)	21,020 lbs. (93.5 kN)

## Optional Equipment

- \*Work lights, mounted on boom base section
- \*Boom mounted aircraft warning light
- \*Timer for diesel heater
- \*Radio/CD player for superstructure cab
- \*Stainless steel exhaust system with spark arrestor
- \*Air conditioning
- \*Hook blocks/headache ball
- \*Engine independent diesel cab heater, with engine pre-heater
- \*Additional cab mounted work light
- \*Strobe light
- \*Working range limiter
- \*Data logger

\*Denotes optional equipment

# Carrier Specifications – North American Version

## Chassis

Box type, torsion resistant frame is fabricated from high strength steel.

## Outrigger System

Four hydraulic two stage outrigger beams with vertical cylinders and outrigger pads, 23.6" (600 mm) square .  
Outrigger can be set in 5 positions:

Full	- 26.6' (8.1 m)
Partial	- 22.4' (6.8 m)
Partial	- 18.4' (5.6 m)
Partial	- 14.4' (4.4 m)
Retracted	- 9.0' (2.7 m)

Independent horizontal and vertical movement controlled from each side of carrier and the superstructure cab.  
Electronic crane level indicators.

## Transmission

Allison 6 speeds forward, 1 reverse  
2 speed transfer case

## Drive/Steer

10x8x10

## Axles

1st axle line – steer  
2<sup>nd</sup> axle line – steer/(optional drive)  
3<sup>rd</sup> axle line – drive/steer (permanent drive with 10x6, disconnects for highway with 10x8)  
4<sup>th</sup> axle line – drive/steer (connects for all wheel steer)  
5<sup>th</sup> axle line – drive/steer

Drive axles with planetary hub reduction and center mounted gearing. Standard inter-axle and cross axle differential locks.

## Suspension

Grove exclusive MEGATRAK suspension. Independent hydro-pneumatic system acting on all wheels with hydraulic lockout. Suspension can be raised 6.3" (160 mm) or lowered 4.7" (120 mm), both longitudinally and transversely. Features an automatic leveling system for highway travel.

## Tires

10 tires, 16.00R25 (Vehicle width – 10.2' [3.1 m])

## Steering

Dual circuit, hydraulic power assisted steering system. Transfer case mounted, ground driven emergency steering pump. Axles 1, 2, 3 and 5 steer on highway. Separate steering of the 4<sup>th</sup> and 5<sup>th</sup> axles for all wheel and crab steering, controlled by an electronic rocker switch.

## Engine

Cummins QSX15, 6 cylinder  
Horsepower: 535 bhp (399 kW) at 2100 rpm  
Torque: 1873 ft.lb/ (2539 Nm) at 1400 rpm  
Off-road: EPA /CARB/EUROMOT (III)  
Standard compression brake, disconnected when hydraulic transmission retarder is optioned

## Fuel Tank Capacity

105 gallons (397 L).

## Electrical System

3 phase alternator: 28V/80A  
2 batteries: 12V/170Ah

## Brakes

Service brakes: pneumatic dual circuit acting on all wheels.

Parking brake: pneumatically operated spring loaded brake acting on axle lines 2, 3, 4 and 5.  
Air dryer.

## Cab

Two-man, aluminum construction with the following features: safety glass, driver and passenger seats with hydraulic suspension, engine-dependent hot water heater, power windows, heated rear view mirrors, complete instrumentation and driving controls.

## Electrical System

24V system with three phase alternator, 28V/100A  
2 batteries, 12V/170 Ah

## Maximum Speed

53 mph (85 kph)

## Gradeability (Theoretical)

50% - 14.00 tires  
45% - 16.00/20.5 tires

## Miscellaneous Standard Equipment

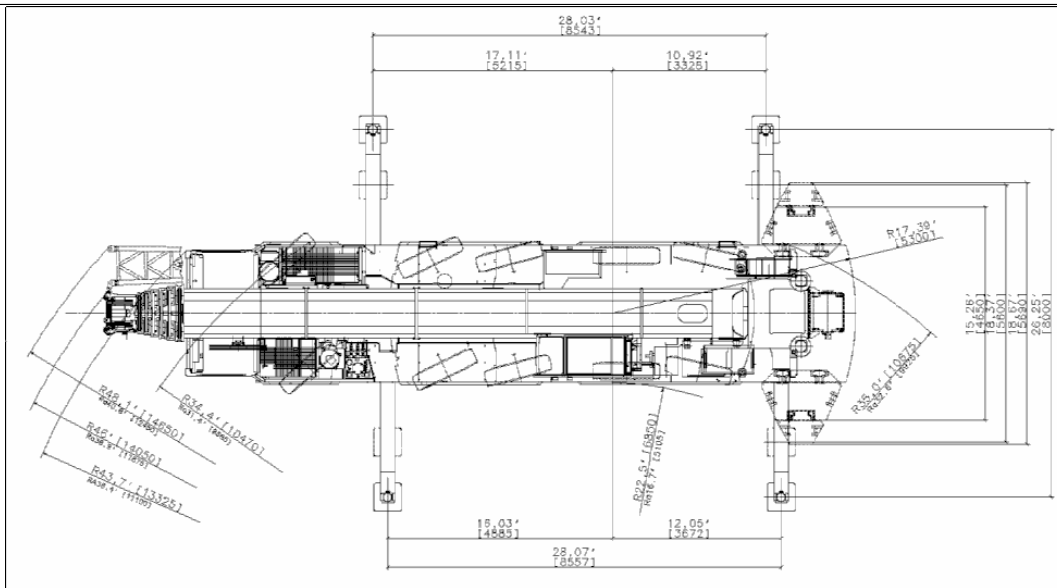
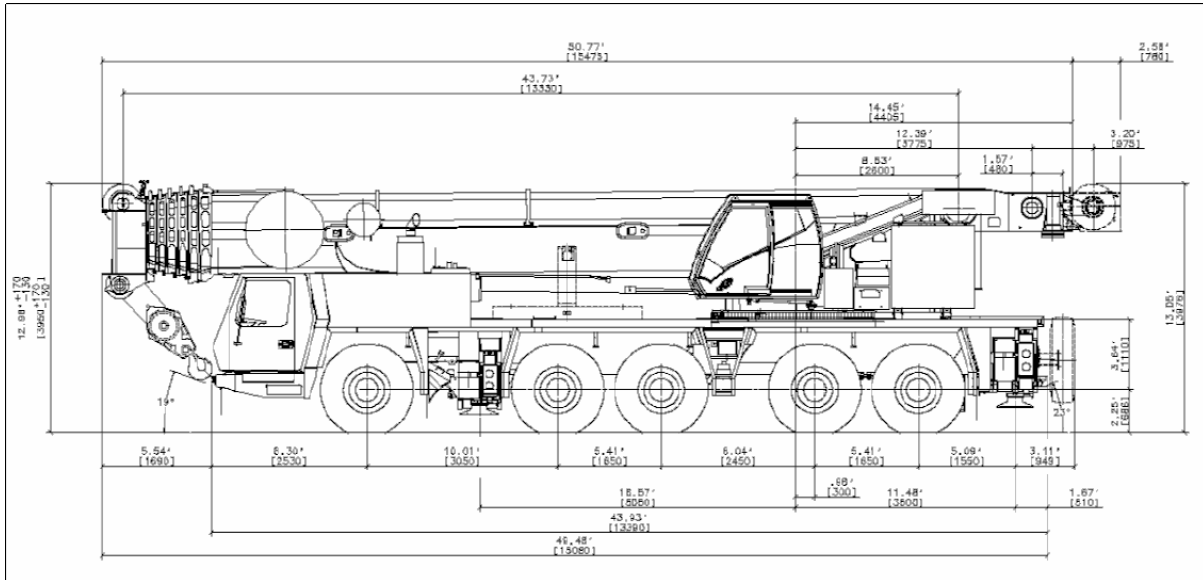
Work light; tool kit; fire extinguishers; auxiliary boom nose; radio /CD player in carrier cab, heated rear view mirrors, wind speed indicator.

## Optional Equipment

- \*Timer for diesel heater
- \*Stainless steel exhaust system with spark arrestor
- \*Air conditioning
- \*14.00R25 tires (vehicle width 9.8 ft.[3.0 m])
- \*20.5R25 tires (vehicle width 10.2 ft.[3.1 m])
- \*10x6x10 drive/steer
- \*Transmission retarder (in lieu of engine compression brake)
- \*Engine independent diesel cab heater, with engine pre-heater
- \*Strobe light
- \*Work lights for outriggers
- \*Spare tire and wheel with carry bracket
- \*Aluminum edging for decking
- \*Rear mounted stowage box
- \*Outrigger pad load indicator
- \*Trailer hitch
- \*Steel outrigger pads

**\*Denotes optional equipment**

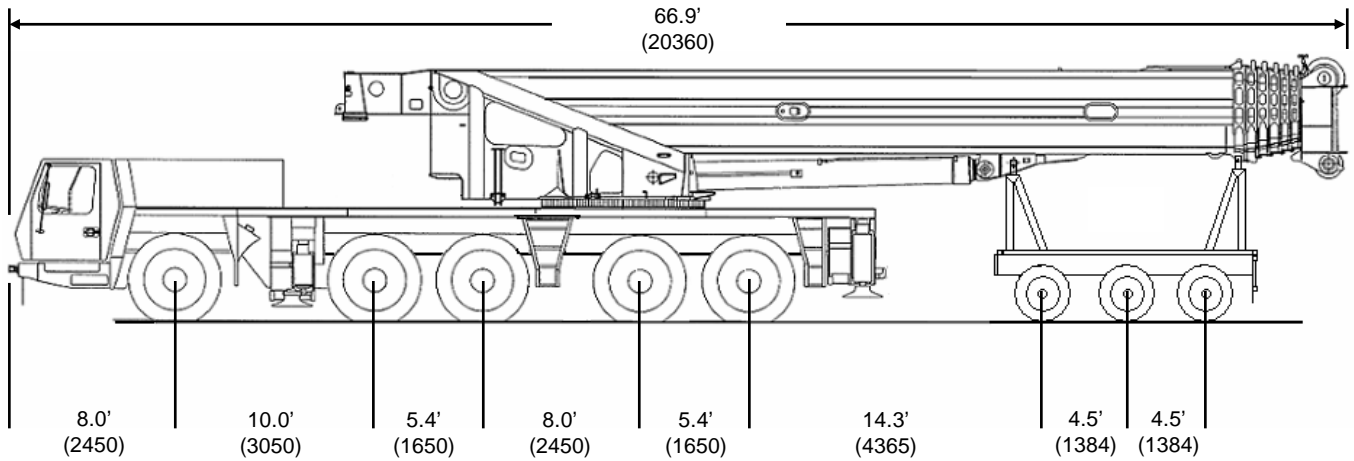
# Weights & Dimensions North American Version



Basic Weights - lb. (kg.)	Axles 1-3	Axles 4 & 5	Total
Cummins power, 14.00 tires, 10X6X10 drive/steer and driver.	82,561 (37449)	48,249 (21886)	130,810 (59335)
<b>Additions:</b>			
10X8X10 drive /steer	703 (319)	79 (36)	783 (355)
14.00R25 spare tire with bracket	-280 (-127)	864 (392)	584 (265)
16.00R25 spare tire with bracket	-342 (-155)	1,058 (480)	717 (325)
20.5R25 spare tire with bracket	-386 (-175)	1,195 (542)	809 (367)
Brackets and hose reel for swingaway	922 (418)	-326 (-148)	595 (270)
39 ft. - 69 ft. (12 m - 21 m) swingaway	5,060 (2295)	-628 (-285)	4,431 (2010)
Auxiliary hoist	-2,544 (-1154)	6,380 (2894)	3,836 (1740)
<b>Substitutions</b>			
16.00R25 tires	794 (360)	529 (240)	1,323 (600)
20.5R25 tires	1,349 (612)	900 (408)	2,249 (1020)
<b>Remove:</b>			
Boom assembly	-43,641 (-19795)	-2,998 (-1360)	-46,639 (-21155)
Front outriggers	-4,773 (-2165)	606 (275)	-4,167 (-1890)
Rear outriggers	2,273 (1031)	-7,432 (-3371)	-5,159 (-2340)
Front and rear outrigger floats	-157 (-71)	-284 (-129)	-441 (-200)

# Trailing Boom Weights

## North American Version



Basic Weights - lb. (kg.)	Axles 1-3		Axles 4 & 5		Dolly		Total	
Cummins power, 16.00 tires, 10X8X10 drive/steer, outrigger pads stowed, auxiliary hoist, 69 ft. swingaway stowed, additional oil cooler, 9500 lb. dolly.	67,515 (30625)		39,584 (17955)		44,265 (20078)		151,365 (68659)	
<b>Substitutions</b>								
14.00R25 tires	-794	(-360)	-529	(-240)	-	-	-1,323	(-600)
20.5R25 tires	556	(252)	370	(168)	-	-	926	(420)
10X6X10 drive/steer	-703	(-319)	-79	(-36)	-	-	-783	(-355)
<b>Remove:</b>								
39 ft. - 69 ft. (12 - 21 m) swingaway	-794	(-360)	-355	(-161)	-3,283	(-1489)	-4,431	(-2010)
Auxiliary hoist	-4,145	(-1880)	309	(140)	-	-	-3,836	(-1740)
Front outriggers	-4,773	(-2165)	606	(275)	-	-	-4,167	(-1890)
Rear outriggers	2,273	(1031)	-7,432	(-3371)	-	-	-5,159	(-2340)
Front and rear outrigger floats	-154	(-70)	-287	(-130)	-	-	-441	(-200)

# Superstructure Specifications – European Version

## Boom

44 ft. - 223 ft. (13.3 m - 68 m) 7 section, full power Mega Form boom with **Twin Lock Pinning**.  
Maximum tip height: 233 ft. (71 m)

## Boom Nose

Eight nylatron sheaves, mounted on heavy duty tapered roller bearings with removable pin-type rope guards. Quick reeve boom nose. Removable auxiliary boom nose with removable pin type rope guard.

## Boom Elevation

Single lift cylinder with safety valve provides boom angle from -1.5° to +83°.

## Hydraulic Offsettable Lattice Extension

39 ft. – 69 ft. (12 - 21 m) bi-fold lattice swingaway extension, hydraulically offsettable and luffing under load, 5°- 40°.

Maximum tip height: 292 ft (89 m)

## Lattice Inserts

2 x 26 ft. (8 m) inserts for use with lattice swingaway extension to increase length to 95 ft. (29 m) or 121 ft. (37 m)

Maximum tip height: 354 ft (107.7 m)

## Load Moment & Anti-Two Block System

Load moment and anti-two block system with audio/visual warning and control lever lockout provides electronic display of boom angle, length, radius, tip height, relative load moment, maximum permissible load, load indication and warning of impending two-block condition.

## Cab

All aluminum constructed cab with acoustical lining, **hydraulic tilted** to 20°. Includes tinted safety glass, adjustable operator's seat with hydraulic suspension, opening windows at side and rear, hinged windshield with wiper, sun visor and window shade. Other features include diesel heater/defroster, armrest integrated crane controls and ergonomically arranged instrumentation.

## Swing

3 planetary gear boxes with fixed displacement axial piston motors. Infinitely variable to 1.3 rpm. Free swing or hydrostatically engaged brake controlled by swing lever. Swing brake selected by foot operated switch.

## Counterweight

169,700 lbs. (77 t) consisting of various sections with hydraulic installation/removal system controlled from the superstructure cab.

## Engine

Mercedes OM 906 LA, 6 cylinder  
Horsepower: 228 bhp (170 kW) at 2200 rpm  
Torque: 597 ft./lb. (810 Nm) at 1200 rpm  
Off-road: EPA/CARB/EUROMOR (III)

## Fuel Tank Capacity

Supplied from chassis fuel tank.

## Electrical System

3 phase alternator: 28V/80A  
2 batteries: 12V/170Ah

## Hydraulic System

3 separate circuits, 1 axial piston variable displacement pump (load sensing) with electronic power limiting control for crane functions and 2 gear pumps for swing and outrigger functions.

Thermostatically controlled oil coolers keep oil at optimum operating temperature.

Hydraulic tank capacity: 242 gal. (915 l)

## Hoist

Main and auxiliary hoist are powered by axial piston motor with planetary gear and brake. "Thumb-thumper" hoist drum rotation indicator alerts operator of hoist movement.

	<b>Main</b>	<b>Auxiliary</b>
Rope length:	951 ft. (290 m)	951 ft. (290 m)
Rope diameter:	22 mm	22 mm
Line speed:	410 ft./min. (125 m/min)	410 ft./min. (125 m/min)
Line pull:	21,020 lbs. (93.5 kN)	21,020 lbs. (93.5 kN)

## Optional Equipment

- \*Work lights, mounted on boom base section
- \*Boom mounted aircraft warning light
- \*Timer for diesel heater
- \*Radio/CD player for superstructure cab
- \*Stainless steel exhaust system with spark arrestor
- \*Air conditioning
- \*Hook blocks/headache ball
- \*Engine independent diesel cab heater, with engine pre-heater
- \*Additional cab mounted work light
- \*Strobe light
- \*Working range limiter
- \*Data logger

\*Denotes optional equipment

# Carrier Specifications – European Version

## Chassis

Box type, torsion resistant frame is fabricated from high strength steel.

## Outrigger System

Four hydraulic two stage outrigger beams with vertical cylinders and outrigger pads, 23.6" (600 mm) square .

Outrigger can be set in 5 positions:

Full	- 26.6' (8.1 m)
Partial	- 22.3' (6.8 m)
Partial	- 18.4' (5.6 m)
Partial	- 14.4' (4.4 m)
Retracted	- 9.0' (2.7 m)

Independent horizontal and vertical movement controlled from each side of carrier and the superstructure cab. Electronic crane level indicators.

## Transmission

Allison 6 speeds forward, 1 reverse  
2 speed transfer case

## Drive/Steer

10x8x10

## Axles

1st axle line – steer

2<sup>nd</sup> axle line – steer/(optional drive)

3<sup>rd</sup> axle line – drive/steer (permanent drive with 10x6, disconnects for highway with 10x8)

4<sup>th</sup> axle line – drive/steer (connects for all wheel steer)

5<sup>th</sup> axle line – drive/steer

Drive axles with planetary hub reduction and center mounted gearing. Standard inter-axle and cross axle differential locks.

## Suspension

Grove exclusive MEGATRAK suspension. Independent hydro-pneumatic system acting on all wheels with hydraulic lockout. Suspension can be raised 6.3" (160 mm) or lowered 4.7" (120 mm), both longitudinally and transversely. Features an automatic leveling system for highway travel.

## Tires

10 tires, 16.00R25 (Vehicle width – 10.2' [3.1 m])

## Steering

Dual circuit, hydraulic power assisted steering system. Transfer case mounted, ground driven emergency steering pump. Axles 1, 2, 3 and 5 steer on highway. Separate steering of the 4<sup>th</sup> and 5<sup>th</sup> axles for all wheel and crab steering, controlled by an electronic rocker switch.

## Engine

Mercedes OM 502 LA, 8 cylinder  
Horsepower: 563 bhp (420 kW) at 1800 rpm  
Torque: 1991 ft.·lb/ (2700 Nm) at 1200 rpm  
Off-road: EPA/CARB/EUROMOT (III)

## Fuel Tank Capacity

136 gallons (515 L). Supplies superstructure and carrier engines.

## Brakes

Service brakes: pneumatic dual circuit acting on all wheels.

Parking brake: pneumatically operated spring loaded brake acting on axle lines 2,3,4 and 5.

Air dryer.

## Cab

Two-man, aluminum construction with the following features: safety glass, driver and passenger seats with hydraulic suspension, engine-dependent hot water heater, power windows, heated rear view mirrors, complete instrumentation and driving controls.

## Electrical System

24V system with three phase alternator, 28V/100A  
2 batteries, 12V/170 Ah

## Maximum Speed

53 mph (85 kph)

## Gradeability (Theoretical)

50% - 14.00 tires

45% - 16.00/20.5 tires

## Miscellaneous Standard Equipment

Work light; tool kit; fire extinguishers; auxiliary boom nose; radio /CD player in carrier cab, heated rear view mirrors, wind speed indicator.

## Optional Equipment

\*Timer for diesel heater

\*Stainless steel exhaust system with spark arrestor

\*Air conditioning

\*14.00R25 tires (vehicle width 9.8 ft.[3.0 m])

\*20.5R25 tires (vehicle width 10.2 ft.[3.1 m])

\*10x6x10 drive/steer

\*Transmission retarder (in lieu of engine compression brake)

\*Engine independent diesel cab heater, with engine pre-heater

\*Strobe light

\*Work lights for outriggers

\*Spare tire and wheel with carry bracket

\*Aluminum edging for decking

\*Rear mounted stowage box

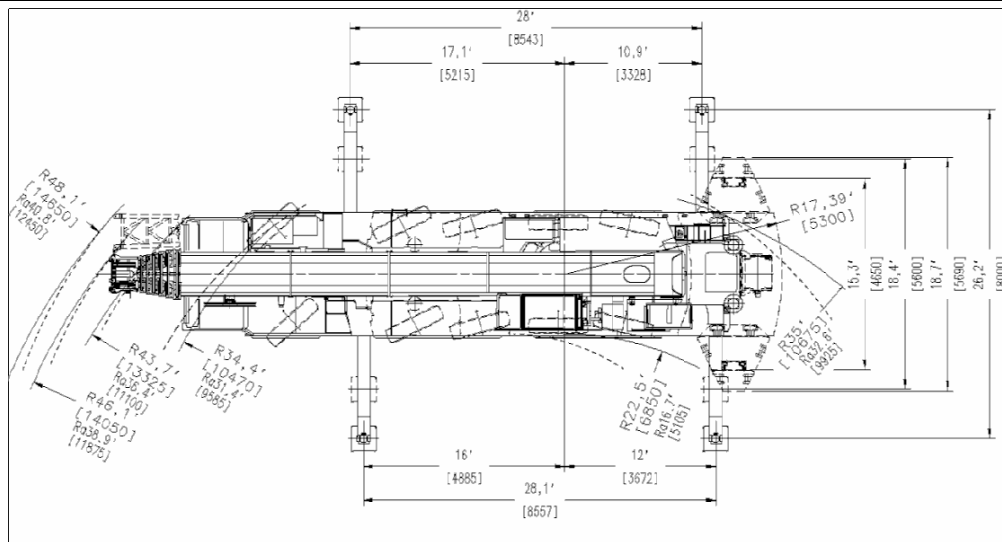
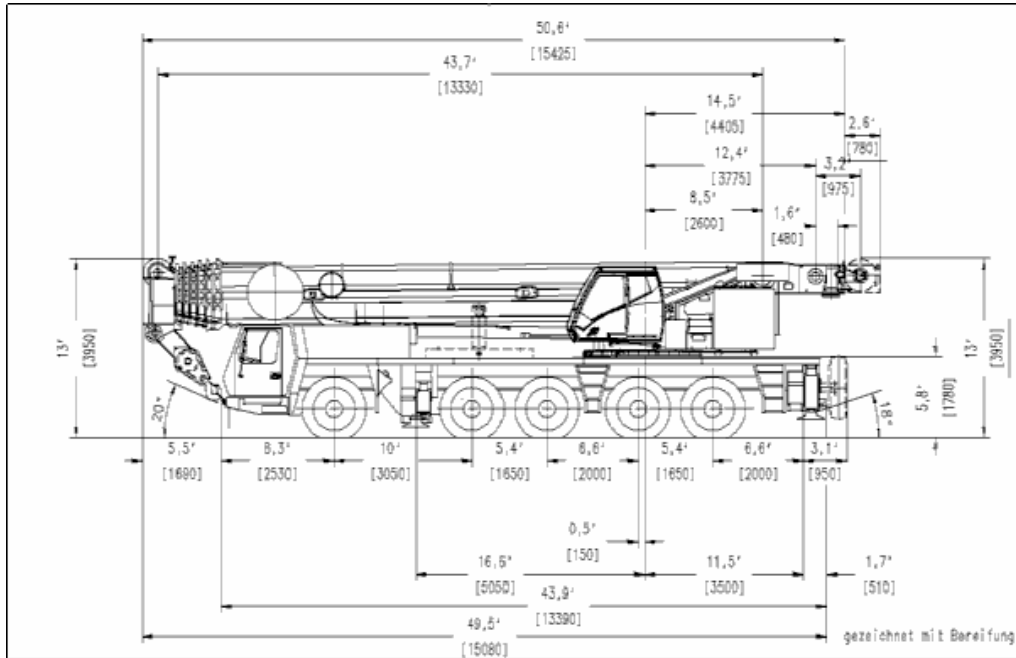
\*Outrigger pad load indicator

\*Trailer hitch

\*Steel outrigger pads

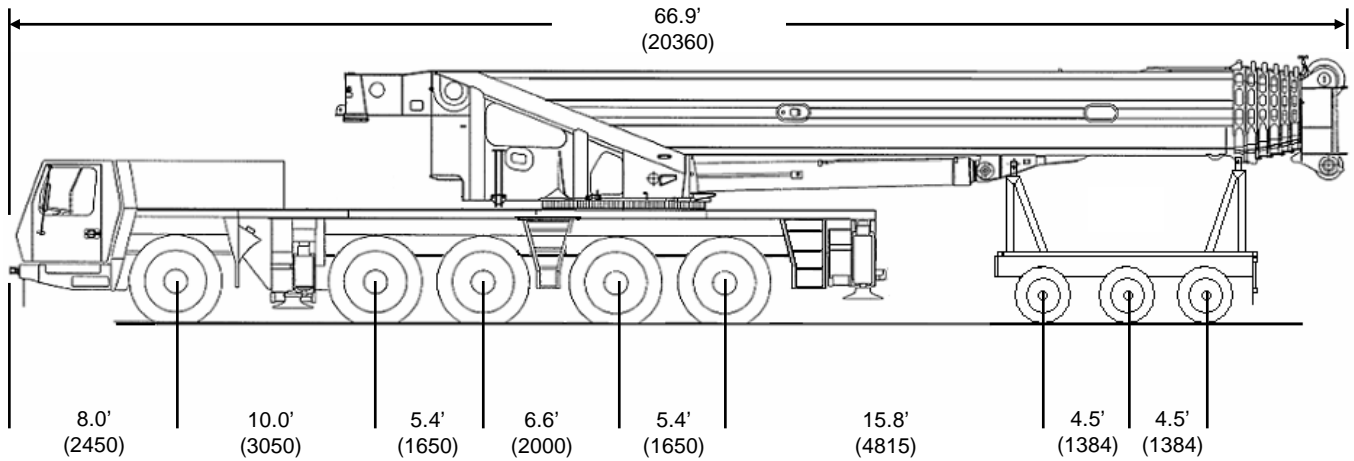
\*Denotes optional equipment

# Weights & Dimensions European Version



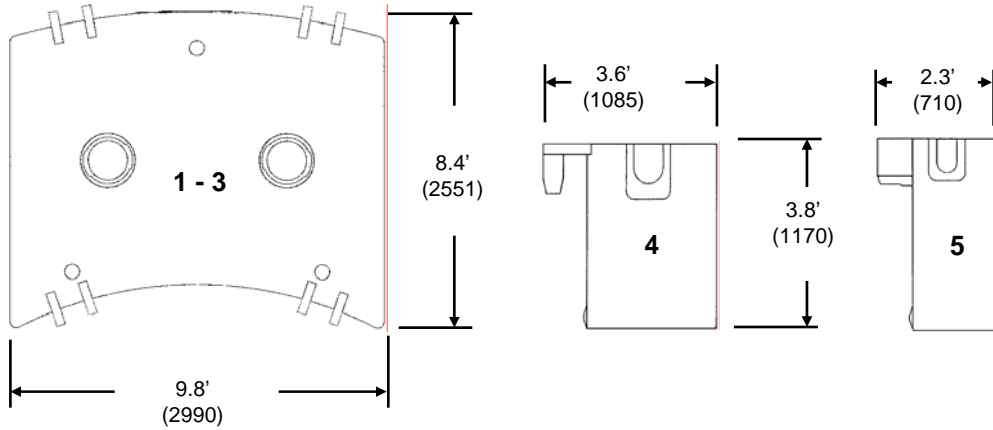
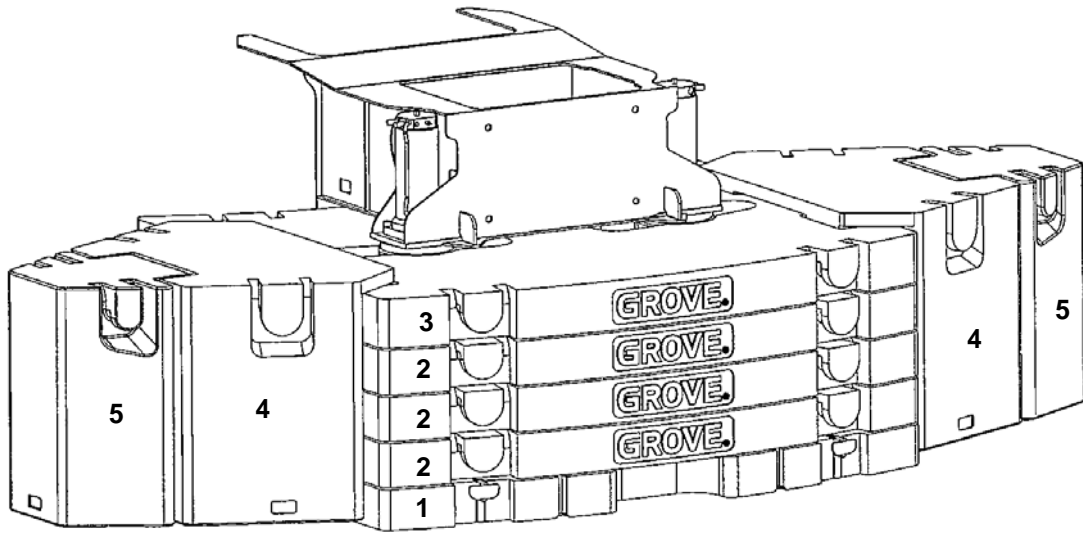
Basic Weights - lb. (kg.)	Axles 1-3		Axles 4 & 5		Total	
Mercedes power, 14.00 tires, 10X6X10 drive/steer and driver.	74,810	(33934)	53,354	(24201)	128,164	(58135)
<b>Additions:</b>						
10X8X10 drive /steer	316	(316)	39	(39)	739	(355)
14.00R25 spare tire with bracket	-357	(-162)	941	(427)	584	(265)
16.00R25 spare tire with bracket	-439	(-199)	1,155	(524)	717	(325)
20.5R25 spare tire with bracket	-496	(-225)	1,305	(592)	809	(367)
Brackets and hose reel for swingaway	950	(431)	-355	(-161)	595	(270)
39 ft. - 69 ft. (12 m - 21 m) swingaway	5,117	(2321)	-686	(-311)	4,431	(-2,010)
Auxiliary hoist	-3,124	(-1417)	6,960	(3157)	3,836	(1740)
<b>Substitutions</b>						
16.00R25 tires	904	(410)	419	(190)	1,323	(600)
20.5R25 tires	1,534	(696)	714	(324)	2,249	(1020)
<b>Remove:</b>						
Boom assembly	-43,270	(-19627)	-3,369	(-1528)	-46,639	(-21155)
Front outriggers	-4,828	(-2190)	661	(300)	-4,167	(-1890)
Rear outriggers	2,950	(1338)	-8,109	(-3678)	-5,159	(-2340)
Front and rear outrigger floats	-130	(-59)	-311	(-141)	-441	(-200)

# Trailing Boom Weights European Version



Basic Weights - lb. (kg.)	Axles 1-3		Axles 4 & 5		Dolly		Total	
Mercedes power, 16.00 tires, 10X8X10 drive/steer, outrigger pads stowed, auxiliary hoist, 69 ft. swingaway stowed, additional oil cooler, 9500 lb. dolly.	60,835 (27594)		44,060 (19985)		44,265 (20078)		149,160 (67658)	
<b>Substitutions</b>								
14.00R25 tires	-904	(-410)	-419	(-190)	-	-	-1,323	(-600)
20.5R25 tires	631	(286)	295	(134)	-	-	926	(420)
10X6X10 drive/steer	-697	(-316)	-86	(-39)	-	-	-783	(-355)
<b>Remove:</b>								
39 ft. - 69 ft. (12 - 21 m) swingaway	-761	(-345)	-388	(-176)	-3,283	(-1489)	-4,431	(-2010)
Auxiliary hoist	-4,173	(-1893)	337	(153)	-	-	-3,836	(-1740)
Front outriggers	-4,828	(-2190)	661	(300)	-	-	-4,167	(-1890)
Rear outriggers	2,950	(1338)	-8,109	(-3678)	-	-	-5,159	(-2340)
Front and rear outrigger floats	-130	(-59)	-311	(-141)	-	-	-441	(-200)

# Counterweight Configuration



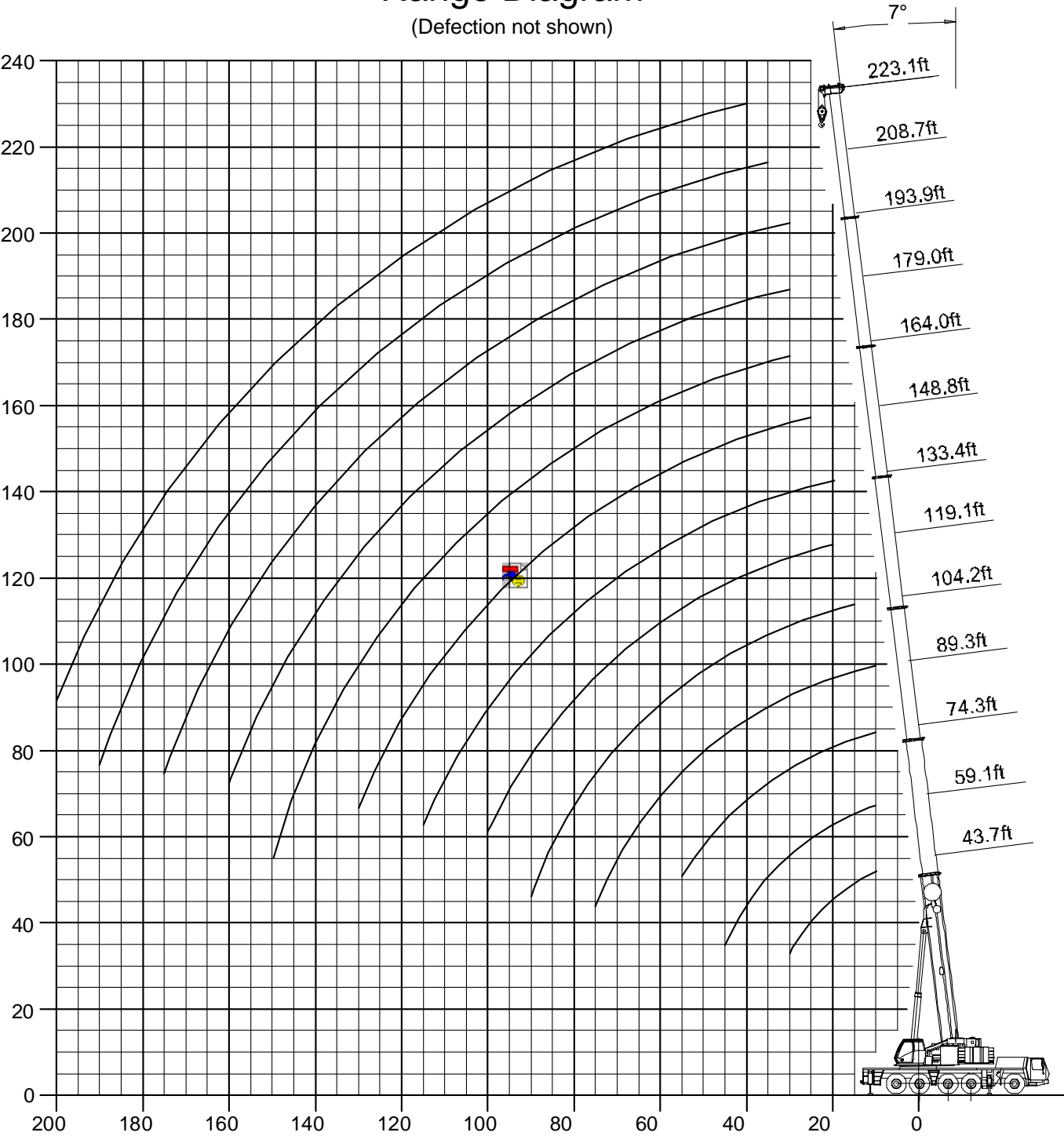
1	2	3	4	5
(Baseplate)	(Stackable)	(Stackable)	(Wing)	(Wing)
24,200	22,046	22,046	22,046	6,600
(11 000)	(10 000)	(10 000)	(10 000)	(3 000)

Counterweight Configuration lb.(kg.)

0					
24,200 (11 000)	●				
46,200 (21 000)	●	●			
68,300 (31 000)	●	X2			
90,300 (41 000)	●	X3			
112,400 (51 000)	●	X3	●		
156,500 (71 000)	●	X3	●	X2	
169,700 (77 000)	●	X3	●	X2	X2

# Main Boom Range Diagram

(Deflection not shown)



**Main Boom  
169,700 lb. Counterweight  
Outriggers Fully Extended  
360°**

		Boom Length													
Radius		43.7'	59.1'	74.3'	89.3'	104.2'	119.1'	133.4'	148.8'	164.0'	179.0'	193.9'	208.7'	223.1'	Radius
		x 1000 lb.													
8	*550.0														8
10	346.0	332.0	312.0	244.0											10
15	272.0	270.0	260.0	242.0	185.0										15
20	220.0	222.0	215.0	212.0	182.0	144.0	106.0								20
25	184.0	185.0	181.0	181.0	166.0	140.0	106.0	86.0							25
30	152.0	157.0	157.0	155.0	151.0	129.0	105.0	86.0	69.0	55.0	45.0				30
35		136.0	136.0	135.0	136.0	118.0	96.0	86.0	69.0	55.0	45.0	36.4			35
40		121.0	119.0	118.0	120.0	108.0	88.0	82.0	69.0	55.0	45.0	36.4	30.8		40
45		99.0	106.0	104.0	106.0	99.0	81.0	75.0	68.0	55.0	45.0	36.4	30.8		45
50			95.0	93.0	95.0	92.0	76.0	70.0	63.0	55.0	45.0	36.4	30.8		50
55			83.0	84.0	85.0	85.0	72.0	64.0	59.0	52.0	45.0	36.4	30.8		55
60				76.0	77.0	79.0	67.0	59.0	54.0	49.0	44.0	36.4	30.8		60
65				70.0	70.0	72.0	63.0	54.0	50.0	46.0	41.2	36.4	30.8		65
70				63.0	64.0	66.0	60.0	50.0	47.0	43.4	39.0	36.0	30.8		70
75				50.0	58.0	61.0	57.0	46.0	43.0	40.4	36.8	34.4	30.8		75
80					53.0	55.0	54.0	42.8	39.6	37.6	34.8	32.6	30.4		80
85					49.0	51.0	51.0	40.2	37.2	35.2	33.0	31.0	29.2		85
90					39.2	46.0	48.0	37.6	34.6	32.8	31.2	29.4	28.0		90
95						42.4	44.0	35.2	32.4	30.8	29.4	28.0	26.8		95
100						38.2	40.8	33.2	30.4	28.8	27.8	26.4	25.6		100
105							37.6	31.4	28.8	27.2	26.4	24.8	24.4		105
110							34.8	29.6	27.0	25.6	24.8	23.0	23.2		110
115							30.4	28.0	25.2	23.8	23.0	21.4	22.0		115
120								26.6	23.2	21.8	21.2	20.4	20.8		120
125								25.2	21.4	20.0	19.4	19.4	19.4		125
130								24.4	20.2	19.0	18.4	18.4	18.0		130
135									19.2	18.0	17.4	17.4	17.2		135
140									18.2	17.0	16.4	16.6	16.4		140
145									17.2	16.0	15.6	15.8	15.6		145
150									12.8	15.4	14.8	15.0	15.0		150
155										14.8	14.0	14.2	14.2		155
160										14.4	13.2	13.4	13.6		160
165											12.6	12.8	13.0		165
170											11.8	12.2	12.4		170
175											11.4	11.6	11.8		175
180												11.0	11.2		180
185												10.6	10.6		185
190												9.6	10.2		190
195													9.6		195
200													9.2		200

\* Over the rear with special equipment  
 Loads greater than 297,000 lb. can only be lifted with additional equipment  
 Loads greater than 335,000 lb. can only be lifted with special equipment

**Main Boom  
112,400 lb. Counterweight  
Outriggers Fully Extended  
360°**

		Boom Length													
Radius	43.7'	59.1'	74.3'	89.3'	104.2'	119.1'	133.4'	148.8'	164.0'	179.0'	193.9'	208.7'	223.1'	Radius	
	x 1000 lb.														
10	336.0	332.0	312.0	244.0										10	
15	262.0	260.0	258.0	242.0	185.0									15	
20	210.0	211.0	208.0	210.0	182.0	144.0	106.0							20	
25	176.0	177.0	176.0	175.0	166.0	140.0	106.0	86.0						25	
30	149.0	150.0	150.0	148.0	150.0	129.0	105.0	86.0	69.0	55.0	45.0			30	
35		132.0	130.0	127.0	124.0	118.0	96.0	86.0	69.0	55.0	45.0	36.4		35	
40		114.0	111.0	110.0	103.0	102.0	88.0	82.0	69.0	55.0	45.0	36.4	30.8	40	
45		98.0	95.0	94.0	90.0	88.0	81.0	75.0	68.0	55.0	45.0	36.4	30.8	45	
50			83.0	82.0	81.0	76.0	76.0	70.0	63.0	55.0	45.0	36.4	30.8	50	
55			72.0	71.0	72.0	67.0	68.0	64.0	59.0	52.0	45.0	36.4	30.8	55	
60				62.0	64.0	62.0	60.0	57.0	54.0	49.0	44.0	36.4	30.8	60	
65				57.0	56.0	58.0	54.0	50.0	49.0	46.0	41.2	36.4	30.8	65	
70				51.0	50.0	52.0	49.0	45.0	43.8	43.2	39.0	36.0	30.8	70	
75				46.0	45.0	47.0	44.0	40.8	39.6	39.0	36.8	34.4	30.8	75	
80					41.6	42.0	40.0	37.0	35.8	35.4	34.8	32.6	30.4	80	
85					39.2	38.2	36.0	34.2	32.4	32.0	32.0	31.0	29.2	85	
90					35.8	34.6	32.6	32.8	29.4	29.2	29.2	29.4	28.0	90	
95						31.4	29.4	31.4	26.8	26.6	26.6	27.4	26.8	95	
100						28.8	26.8	28.6	24.4	24.4	24.4	25.0	25.6	100	
105							25.2	26.0	22.2	22.8	22.2	23.0	23.6	105	
110							24.2	23.8	20.0	21.2	20.4	21.2	21.8	110	
115							23.4	21.8	18.4	20.2	19.0	19.4	20.2	115	
120								20.0	17.8	19.4	18.0	18.6	18.6	120	
125								18.4	17.0	18.4	17.2	17.6	17.2	125	
130								16.8	16.2	17.8	16.4	16.6	15.8	130	
135									15.6	16.8	15.8	15.8	14.6	135	
140									15.0	15.4	15.0	14.8	13.4	140	
145										14.4	14.2	13.6	12.4	145	
150										13.2	13.2	12.6	11.2	150	
155										12.2	12.2	11.4	10.2	155	
160										11.4	11.2	10.6	9.2	160	
165											10.6	9.6	8.4	165	
170											9.8	8.8	7.6	170	
175											9.2	8.0	6.8	175	
180												7.2	6.0	180	
185												6.6	5.2	185	
190												6.0	4.6	190	
195													4.0	195	
200													3.4	200	

Loads greater than 297,000 lb. can only be lifted with additional equipment  
 Loads greater than 335,000 lb. can only be lifted with special equipment

**Main Boom  
90,300 lb. Counterweight  
Outriggers Fully Extended  
360°**

		Boom Length												
Radius	43.7'	59.1'	74.3'	89.3'	104.2'	119.1'	133.4'	148.8'	164.0'	179.0'	193.9'	208.7'	223.1'	Radius
	x 1000 lb.													
10	332.0	328.0	312.0	244.0										10
15	256.0	256.0	254.0	242.0	185.0									15
20	207.0	208.0	206.0	206.0	182.0	144.0	106.0							20
25	172.0	173.0	173.0	171.0	166.0	140.0	106.0	86.0						25
30	146.0	149.0	146.0	138.0	131.0	128.0	105.0	86.0	69.0	55.0	45.0			30
35		124.0	117.0	114.0	110.0	105.0	96.0	86.0	69.0	55.0	45.0	36.4		35
40		102.0	101.0	95.0	94.0	88.0	87.0	82.0	69.0	55.0	45.0	36.4	30.8	40
45		84.0	85.0	81.0	80.0	76.0	75.0	71.0	68.0	55.0	45.0	36.4	30.8	45
50			72.0	72.0	70.0	70.0	65.0	61.0	59.0	55.0	45.0	36.4	30.8	50
55			64.0	64.0	61.0	62.0	57.0	54.0	52.0	51.0	45.0	36.4	30.8	55
60				55.0	56.0	55.0	51.0	47.0	46.0	45.0	44.0	36.4	30.8	60
65				49.0	51.0	49.0	45.0	42.0	40.6	40.0	39.6	36.4	30.8	65
70				43.6	45.0	44.0	40.6	39.8	36.2	35.6	35.4	36.0	30.8	70
75				38.4	40.6	39.4	36.4	37.6	32.4	32.0	31.8	32.4	30.8	75
80					36.6	35.4	33.0	34.0	29.0	29.4	29.2	30.2	29.8	80
85					33.0	31.6	30.0	31.0	26.4	28.2	27.8	28.6	27.0	85
90					29.8	28.6	28.6	28.4	25.0	27.0	26.2	26.6	24.6	90
95						25.8	27.4	25.6	23.2	25.6	24.6	24.4	22.4	95
100						23.4	25.2	23.2	21.2	24.0	23.0	22.4	20.4	100
105							22.8	21.0	20.4	22.2	20.8	20.6	18.6	105
110							21.0	19.0	19.4	20.4	19.8	18.8	17.0	110
115							19.2	17.2	18.4	18.6	18.4	17.4	15.6	115
120								16.0	17.8	17.0	17.0	16.0	14.2	120
125								15.2	17.0	15.8	16.0	14.6	13.0	125
130								14.6	15.8	15.0	14.6	13.4	11.8	130
135									14.6	14.2	13.4	12.2	10.6	135
140									13.4	13.0	12.2	11.2	9.6	140
145										12.0	11.2	10.0	8.8	145
150										11.0	10.2	9.0	7.8	150
155										10.2	9.2	8.2	7.0	155
160										9.4	8.4	7.4	6.0	160
165											7.6	6.6	5.2	165
170											7.0	5.8	4.6	170
175											6.2	5.2	3.8	175
180												4.4	3.2	180
185												3.8		185
190												3.2		190
195														195
200														200

Loads greater than 297,000 lb. can only be lifted with additional equipment  
 Loads greater than 335,000 lb. can only be lifted with special equipment

**Main Boom  
46,200 lb. Counterweight  
Outriggers Fully Extended  
360°**

		Boom Length												
Radius	43.7'	59.1'	74.3'	89.3'	104.2'	119.1'	133.4'	148.8'	164.0'	179.0'	193.9'	208.7'	223.1'	Radius
x 1000 lb.														
10	320.0	318.0	312.0	244.0										10
15	248.0	248.0	246.0	242.0	185.0									15
20	199.0	200.0	187.0	175.0	158.0	144.0	106.0							20
25	154.0	148.0	138.0	128.0	123.0	113.0	106.0	86.0						25
30	114.0	111.0	105.0	103.0	96.0	94.0	87.0	81.0	69.0	55.0	45.0			30
35		90.0	87.0	83.0	82.0	77.0	71.0	66.0	63.0	55.0	45.0	36.4		35
40		72.0	72.0	68.0	68.0	64.0	59.0	59.0	52.0	51.0	45.0	36.4	30.8	40
45		58.0	60.0	61.0	58.0	54.0	50.0	51.0	43.8	43.0	42.0	36.4	30.8	45
50			50.0	52.0	50.0	47.0	45.0	43.4	39.2	40.6	39.6	36.0	30.8	50
55			45.0	46.0	43.2	40.2	41.2	37.4	36.8	37.4	36.6	34.0	30.8	55
60				39.2	37.8	36.0	36.0	32.6	34.6	34.0	32.2	29.8	27.4	60
65				33.8	33.2	33.8	31.8	30.6	31.4	30.2	28.4	26.2	24.0	65
70				29.4	29.0	30.6	28.2	29.0	28.4	26.8	25.2	23.2	21.0	70
75				22.8	25.4	27.4	25.0	27.0	25.4	24.0	22.4	20.4	18.4	75
80					22.2	24.2	23.2	24.4	23.0	21.4	20.0	18.2	16.2	80
85					22.0	21.4	20.8	22.0	20.6	19.2	17.8	16.0	14.2	85
90					19.6	19.0	19.4	20.0	18.6	17.2	16.0	14.2	12.4	90
95						17.4	18.4	18.0	16.8	15.6	14.2	12.6	10.8	95
100						16.6	16.4	16.2	15.2	14.0	12.6	11.0	9.2	100
105							14.8	14.6	13.8	12.6	11.2	9.8	8.0	105
110							13.4	13.0	12.4	11.2	10.0	8.4	6.8	110
115							12.0	11.6	11.0	10.0	8.8	7.4	5.6	115
120								10.4	9.8	9.0	7.8	6.4	4.6	120
125								9.4	8.6	8.0	6.8	5.4	3.8	125
130								8.4	7.6	7.0	6.0	4.6	2.8	130
135									6.8	6.0	5.2	3.8		135
140									6.0	5.2	4.4	3.0		140
145										4.4	3.6			145
150										3.6	2.8			150
155										3.0				155
160														160

Loads greater than 297,000 lb. can only be lifted with additional equipment  
 Loads greater than 335,000 lb. can only be lifted with special equipment

**Main Boom  
0 lb. Counterweight  
Outriggers Fully Extended  
360°**

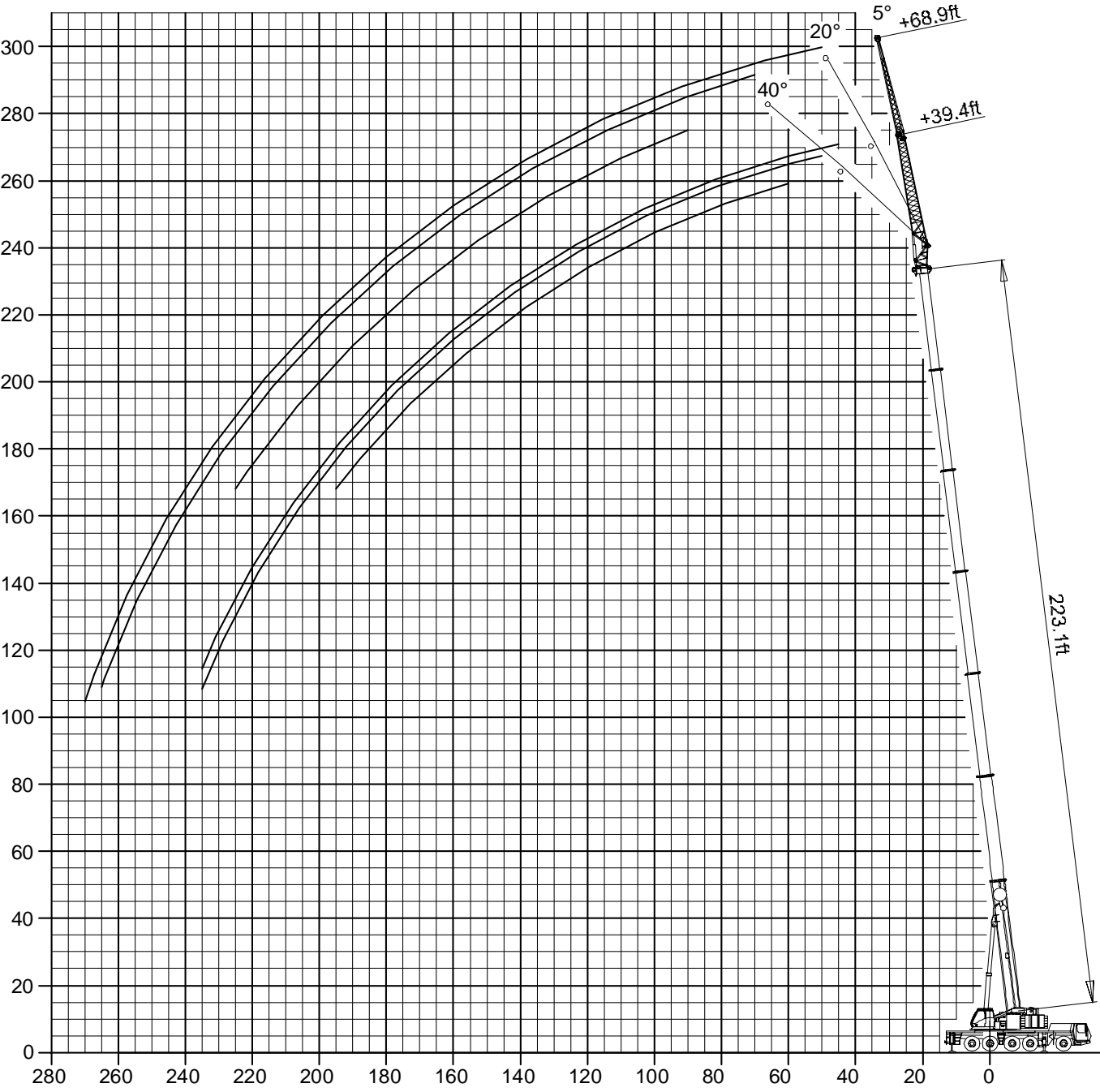
Boom Length												
Radius	43.7'	59.1'	74.3'	89.3'	104.2'	119.1'	133.4'	148.8'	164.0'	177.6	192.6	Radius
	x 1000 lb.											
10	308.0	308.0	286.0	232.0								10
15	222.0	185.0	160.0	144.0	116.0							15
20	122.0	114.0	105.0	100.0	90.0	79.0	76.0					20
25	81.0	80.0	77.0	72.0	65.0	63.0	57.0	56.0				25
30	56.0	58.0	57.0	54.0	53.0	49.0	48.0	45.0	41.2	37.6	34.4	30
35		44.0	44.0	44.0	42.4	41.2	38.8	36.4	33.4	30.6	28.0	35
40		34.2	35.6	36.0	35.0	33.8	32.0	30.0	27.6	25.2	22.8	40
45		27.4	28.8	29.6	29.0	28.0	26.6	25.0	23.0	20.8	18.8	45
50			23.8	24.8	24.2	23.6	22.4	21.0	19.2	17.2	15.4	50
55			19.8	20.8	20.4	20.0	19.0	17.8	16.2	14.4	12.8	55
60				17.6	17.4	17.0	16.2	15.0	13.6	12.0	10.4	60
65				15.0	14.8	14.6	13.8	12.8	11.4	9.8	8.4	65
70				12.6	12.6	12.4	11.8	10.8	9.4	8.0	6.8	70
75				5.8	10.8	10.6	10.0	9.2	7.8	6.6	5.2	75
80					9.2	9.0	8.4	7.6	6.4	5.2	4.0	80
85					7.6	7.8	7.2	6.4	5.2	4.0	2.8	85
90					6.2	6.6	6.0	5.2	4.0	2.8		90
95						5.4	4.8	4.2	3.0			95
100						4.4	4.0	3.2				100
105							3.2					105
110												110
115												115
120												120

Loads greater than 297,000 lb. can only be lifted with additional equipment

Loads greater than 335,000 lb. can only be lifted with special equipment

# Lattice Swingaway Range Diagram

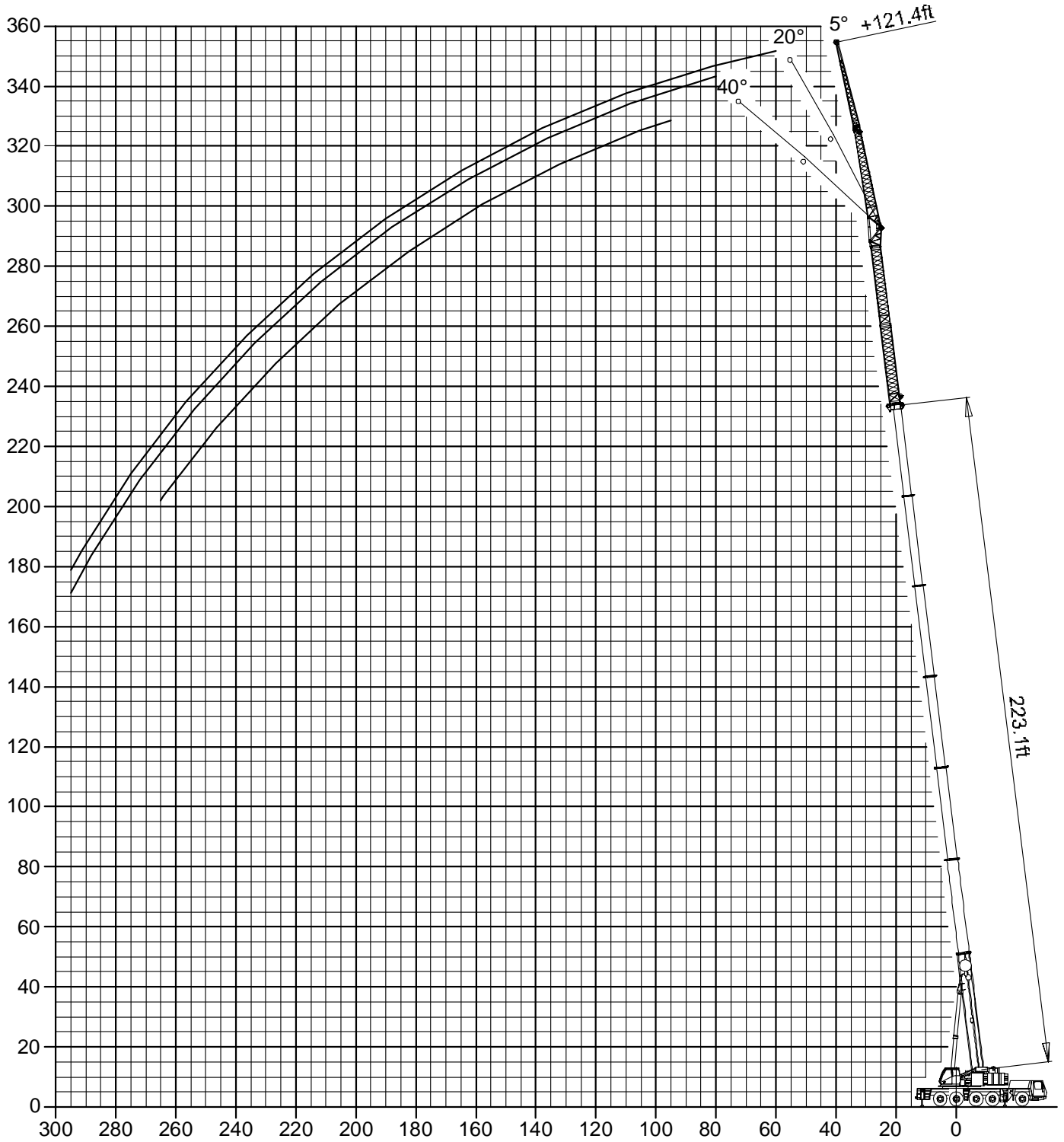
(Deflection not shown)



# Lattice Swingaway with Inserts

## Range Diagram

(Deflection not shown)



**Boom Extension  
169,700 lb. Counterweight  
Outriggers Fully Extended  
360°**

Radius	Extension Length												Radius
	223' + 39.4'			223' + 68.9'			223' + 95.1'			223' + 121.4'			
	5°	5°-20°	20°-40°	5°	5°-20°	20°-40°	5°	5°-20°	20°-40°	5°	5°-20°	20°-40°	
x 1000 lb.													
45	16.4												45
50	16.4	16.4		10.0									50
55	16.4	16.4		10.0			7.4						55
60	16.4	16.4	16.4	10.0			7.4			5.0			60
65	16.4	16.4	16.4	10.0			7.4			5.0			65
70	16.4	16.4	16.4	10.0	10.0		7.4			5.0			70
75	16.4	16.4	16.4	10.0	10.0		7.4	7.4		5.0			75
80	16.4	16.4	16.4	10.0	10.0		7.4	7.4		5.0	5.0		80
85	16.4	16.4	16.0	10.0	10.0		7.4	7.4		5.0	5.0		85
90	16.4	16.2	15.6	10.0	10.0	9.4	7.4	7.4		5.0	5.0		90
95	16.4	15.8	15.2	10.0	10.0	9.4	7.4	7.4	7.2	5.0	5.0	4.0	95
100	16.0	15.2	14.8	10.0	10.0	9.2	7.4	7.4	7.2	5.0	5.0	4.0	100
105	15.6	14.8	14.4	10.0	10.0	9.2	7.4	7.4	7.2	5.0	5.0	4.0	105
110	15.0	14.4	14.0	10.0	10.0	9.2	7.4	7.4	7.2	5.0	5.0	4.0	110
115	14.4	13.8	13.6	10.0	10.0	9.0	7.4	7.4	7.2	5.0	5.0	4.0	115
120	14.0	13.4	13.2	10.0	10.0	9.0	7.4	7.4	7.2	5.0	5.0	4.0	120
125	13.6	13.0	12.8	10.0	10.0	9.0	7.4	7.4	7.2	5.0	5.0	4.0	125
130	13.2	12.6	12.4	10.0	9.8	8.8	7.4	7.4	7.2	5.0	5.0	4.0	130
135	12.8	12.2	12.2	10.0	9.6	8.8	7.4	7.4	7.2	5.0	5.0	4.0	135
140	12.4	12.0	11.8	9.8	9.4	8.8	7.4	7.2	7.0	5.0	5.0	4.0	140
145	12.0	11.6	11.4	9.4	9.0	8.6	7.4	7.2	7.0	5.0	5.0	4.0	145
150	11.6	11.2	11.2	9.2	8.8	8.6	7.4	7.0	6.8	5.0	4.8	4.0	150
155	11.2	11.0	11.0	9.0	8.6	8.4	7.2	6.8	6.6	5.0	4.8	4.0	155
160	11.0	10.6	10.6	8.6	8.4	8.2	7.0	6.6	6.6	5.0	4.8	4.0	160
165	10.6	10.4	10.4	8.4	8.2	8.0	6.8	6.6	6.4	4.8	4.8	4.0	165
170	10.2	10.2	10.2	8.2	8.0	8.0	6.6	6.4	6.2	4.8	4.6	4.0	170
175	9.8	9.8	10.0	8.0	7.8	7.8	6.4	6.2	6.2	4.8	4.6	4.0	175
180	9.6	9.6	9.6	7.8	7.6	7.6	6.2	6.0	6.0	4.6	4.6	4.0	180
185	9.2	9.2	9.4	7.6	7.4	7.4	6.0	5.8	5.8	4.6	4.4	4.0	185
190	8.8	8.8	9.0	7.4	7.2	7.2	5.8	5.6	5.8	4.4	4.4	4.0	190
195	8.2	8.4	8.6	7.2	7.0	7.0	5.6	5.6	5.6	4.2	4.2	4.0	195
200	8.0	8.0		7.0	6.8	6.8	5.4	5.4	5.4	4.2	4.0	4.0	200
205	7.6	7.8		6.8	6.6	6.8	5.2	5.2	5.4	4.0	4.0	4.0	205
210	7.2	7.4		6.6	6.4	6.6	5.0	5.0	5.2	3.8	3.8	4.0	210
215	6.8	7.0		6.4	6.4	6.4	5.0	5.0	5.0	3.6	3.8	3.8	215
220	6.4	6.6		6.2	6.2	6.4	4.8	4.8	5.0	3.6	3.6	3.8	220
225	6.2	6.2		6.0	6.0	6.2	4.6	4.6	4.8	3.4	3.4	3.6	225
230	5.8	6.0		5.8	6.0		4.6	4.6	4.6	3.2	3.4	3.6	230
235	5.4	5.6		5.6	5.8		4.4	4.4	4.6	3.2	3.2	3.4	235
240				5.2	5.6		4.2	4.2	4.4	3.0	3.2	3.2	240
245				5.0	5.2		4.2	4.2	4.2	3.0	3.0	3.2	245
250				4.8	5.0		4.0	4.0		2.8	2.8	3.0	250
255				4.4	4.6		3.8	4.0		2.8	2.8	3.0	255
260				4.2	4.4		3.8	3.8		2.6	2.6	2.8	260
265				4.0	4.0		3.6	3.6		2.6	2.6	2.8	265
270				3.2			3.4	3.6		2.4	2.4		270
275							3.2	3.4		2.4	2.4		275
280							3.0	3.0		2.2	2.2		280
285							2.6	2.6		2.2	2.2		285
290							2.2	2.2		2.0	2.2		290
295										2.0	2.0		295

**Boom Extension  
112,400 lb. Counterweight  
Outriggers Fully Extended  
360°**

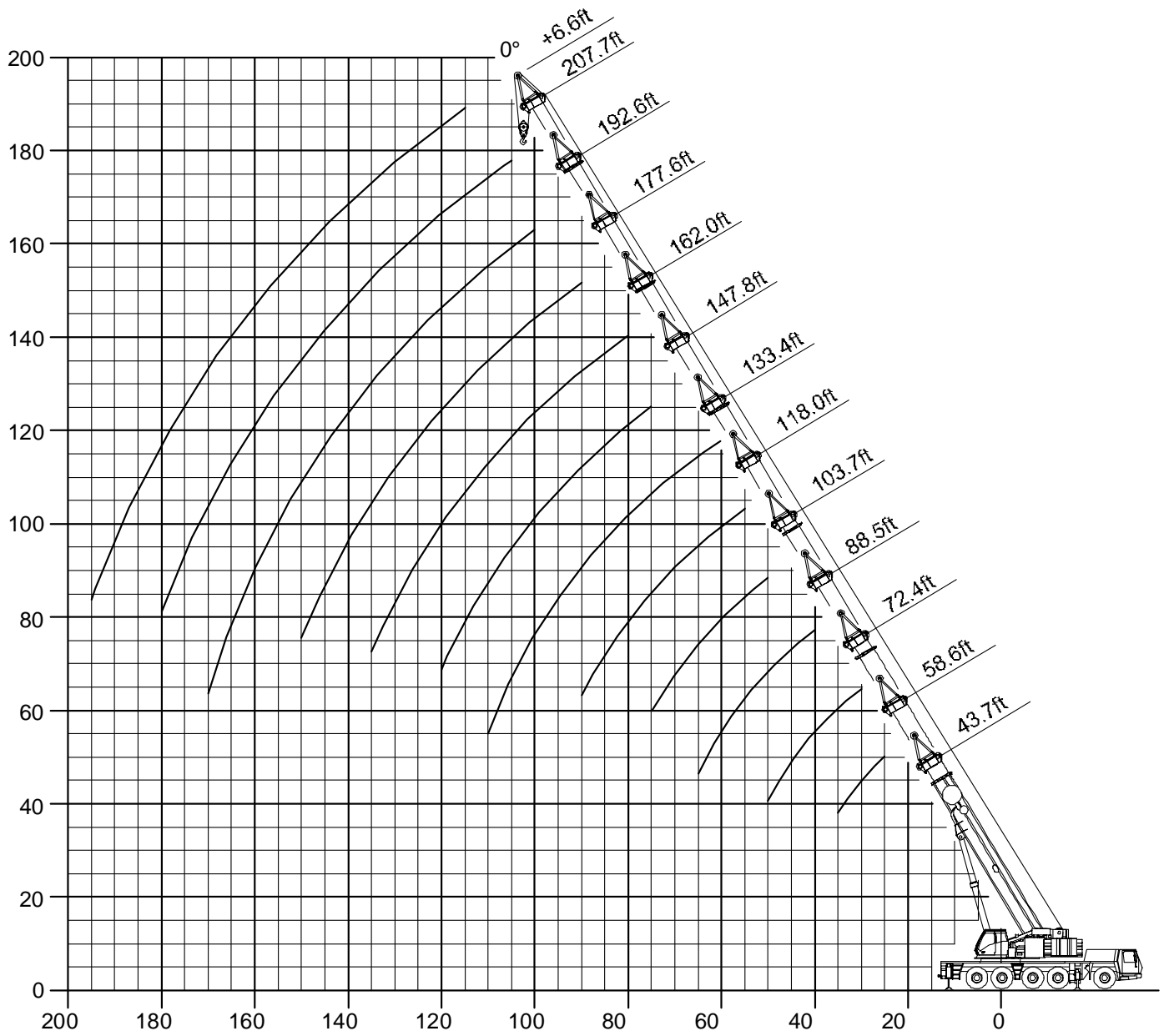
Radius	Boom Length + Extension Length												Radius
	223' + 39.4'			223' + 68.9'			223' + 95.1'			223' + 121.4'			
	5°	5°-20°	20°-40°	5°	5°-20°	20°-40°	5°	5°-20°	20°-40°	5°	5°-20°	20°-40°	
x 1000 lb.													
45	16.4												45
50	16.4	16.4		10.0									50
55	16.4	16.4		10.0			7.4						55
60	16.4	16.4	16.4	10.0			7.4			5.0			60
65	16.4	16.4	16.4	10.0			7.4			5.0			65
70	16.4	16.4	16.4	10.0	10.0		7.4			5.0			70
75	16.4	16.4	16.4	10.0	10.0		7.4	7.4		5.0			75
80	16.4	16.4	16.4	10.0	10.0		7.4	7.4		5.0	5.0		80
85	16.4	16.4	16.0	10.0	10.0		7.4	7.4		5.0	5.0		85
90	16.4	16.2	15.6	10.0	10.0	9.4	7.4	7.4		5.0	5.0		90
95	16.4	15.8	15.2	10.0	10.0	9.4	7.4	7.4	7.2	5.0	5.0	4.0	95
100	16.0	15.2	14.8	10.0	10.0	9.2	7.4	7.4	7.2	5.0	5.0	4.0	100
105	15.6	14.8	14.4	10.0	10.0	9.2	7.4	7.4	7.2	5.0	5.0	4.0	105
110	15.0	14.4	14.0	10.0	10.0	9.2	7.4	7.4	7.2	5.0	5.0	4.0	110
115	14.4	13.8	13.6	10.0	10.0	9.0	7.4	7.4	7.2	5.0	5.0	4.0	115
120	14.0	13.4	13.2	10.0	10.0	9.0	7.4	7.4	7.2	5.0	5.0	4.0	120
125	13.6	13.0	12.8	10.0	10.0	9.0	7.4	7.4	7.2	5.0	5.0	4.0	125
130	13.2	12.6	12.4	10.0	9.8	8.8	7.4	7.4	7.2	5.0	5.0	4.0	130
135	12.8	12.2	12.2	10.0	9.6	8.8	7.4	7.4	7.2	5.0	5.0	4.0	135
140	12.4	12.0	11.8	9.8	9.4	8.8	7.4	7.2	7.0	5.0	5.0	4.0	140
145	12.0	11.6	11.4	9.4	9.0	8.6	7.4	7.2	7.0	5.0	5.0	4.0	145
150	11.2	11.2	11.2	9.2	8.8	8.6	7.4	7.0	6.8	5.0	4.8	4.0	150
155	10.2	10.2	10.8	9.0	8.6	8.4	7.2	6.8	6.6	5.0	4.8	4.0	155
160	9.4	9.4	10.0	8.6	8.4	8.2	7.0	6.6	6.6	5.0	4.8	4.0	160
165	8.6	8.6	9.2	8.4	8.2	8.0	6.8	6.6	6.4	4.8	4.8	4.0	165
170	7.8	7.8	8.4	8.2	8.0	8.0	6.6	6.4	6.2	4.8	4.6	4.0	170
175	7.0	7.0	7.6	8.0	7.8	7.8	6.4	6.2	6.2	4.8	4.6	4.0	175
180	6.4	6.4	6.8	7.2	7.2	7.6	6.2	6.0	6.0	4.6	4.6	4.0	180
185	5.6	5.6	6.0	6.6	6.6	7.4	6.0	5.8	5.8	4.6	4.4	4.0	185
190	5.0	5.0	5.4	6.0	6.0	6.8	5.8	5.6	5.8	4.4	4.4	4.0	190
195	4.4	4.4	4.8	5.4	5.4	6.2	5.4	5.4	5.6	4.2	4.2	4.0	195
200	3.8	3.8		4.8	4.8	5.6	4.8	4.8	5.4	4.2	4.0	4.0	200
205	3.2	3.2		4.4	4.4	5.0	4.2	4.2	5.0	4.0	4.0	4.0	205
210	2.6	2.6		3.8	3.8	4.4	3.8	3.8	4.4	3.6	3.6	4.0	210
215	2.2	2.2		3.2	3.2	3.8	3.2	3.2	4.0	3.2	3.2	3.8	215
220				2.8	2.8	3.4	2.8	2.8	3.4	2.6	2.6	3.4	220
225				2.2	2.2	2.8	2.4	2.4	3.0	2.2	2.2	3.0	225
230							2.0	2.0	2.6			2.4	230
235									2.2			2.0	235
240													240

**Boom Extension  
90,300 lb. Counterweight  
Outriggers Fully Extended  
360°**

Radius	Boom Length + Extension Length												Radius
	223' + 39.4'			223' + 68.9'			223' + 95.1'			223' + 121.4'			
	5°	5°-20°	20°-40°	5°	5°-20°	20°-40°	5°	5°-20°	20°-40°	5°	5°-20°	20°-40°	
	x 1000 lb.												
45	16.4												45
50	16.4	16.4		10.0									50
55	16.4	16.4		10.0			7.4						55
60	16.4	16.4	16.4	10.0			7.4			5.0			60
65	16.4	16.4	16.4	10.0			7.4			5.0			65
70	16.4	16.4	16.4	10.0	10.0		7.4			5.0			70
75	16.4	16.4	16.4	10.0	10.0		7.4	7.4		5.0			75
80	16.4	16.4	16.4	10.0	10.0		7.4	7.4		5.0	5.0		80
85	16.4	16.4	16.0	10.0	10.0		7.4	7.4		5.0	5.0		85
90	16.4	16.2	15.6	10.0	10.0	9.4	7.4	7.4		5.0	5.0		90
95	16.4	15.8	15.2	10.0	10.0	9.4	7.4	7.4	7.2	5.0	5.0	4.0	95
100	16.0	15.2	14.8	10.0	10.0	9.2	7.4	7.4	7.2	5.0	5.0	4.0	100
105	15.6	14.8	14.4	10.0	10.0	9.2	7.4	7.4	7.2	5.0	5.0	4.0	105
110	15.0	14.4	14.0	10.0	10.0	9.2	7.4	7.4	7.2	5.0	5.0	4.0	110
115	14.4	13.8	13.6	10.0	10.0	9.0	7.4	7.4	7.2	5.0	5.0	4.0	115
120	13.8	13.4	13.2	10.0	10.0	9.0	7.4	7.4	7.2	5.0	5.0	4.0	120
125	12.6	12.6	12.8	10.0	10.0	9.0	7.4	7.4	7.2	5.0	5.0	4.0	125
130	11.6	11.6	12.4	10.0	9.8	8.8	7.4	7.4	7.2	5.0	5.0	4.0	130
135	10.4	10.4	11.2	10.0	9.6	8.8	7.4	7.4	7.2	5.0	5.0	4.0	135
140	9.4	9.4	10.2	9.8	9.4	8.8	7.4	7.2	7.0	5.0	5.0	4.0	140
145	8.6	8.6	9.2	9.4	9.0	8.6	7.4	7.2	7.0	5.0	5.0	4.0	145
150	7.6	7.6	8.4	8.6	8.6	8.6	7.4	7.0	6.8	5.0	4.8	4.0	150
155	6.8	6.8	7.4	7.8	7.8	8.4	7.2	6.8	6.6	5.0	4.8	4.0	155
160	6.0	6.0	6.6	7.0	7.0	8.2	6.8	6.6	6.6	5.0	4.8	4.0	160
165	5.4	5.4	6.0	6.2	6.2	7.4	6.2	6.2	6.4	4.8	4.8	4.0	165
170	4.8	4.8	5.2	5.6	5.6	6.6	5.4	5.4	6.2	4.8	4.6	4.0	170
175	4.0	4.0	4.6	5.0	5.0	6.0	4.8	4.8	6.0	4.6	4.6	4.0	175
180	3.4	3.4	4.0	4.4	4.4	5.4	4.2	4.2	5.2	4.0	4.0	4.0	180
185	2.8	2.8	3.4	3.8	3.8	4.6	3.6	3.6	4.6	3.6	3.6	4.0	185
190	2.4	2.4	2.8	3.2	3.2	4.0	3.2	3.2	4.0	3.0	3.0	4.0	190
195			2.2	2.8	2.8	3.6	2.6	2.6	3.6	2.6	2.6	3.4	195
200				2.2	2.2	3.0	2.2	2.2	3.0	2.0	2.0	2.8	200
205						2.4			2.4			2.4	205
210						2.0			2.0			2.0	210

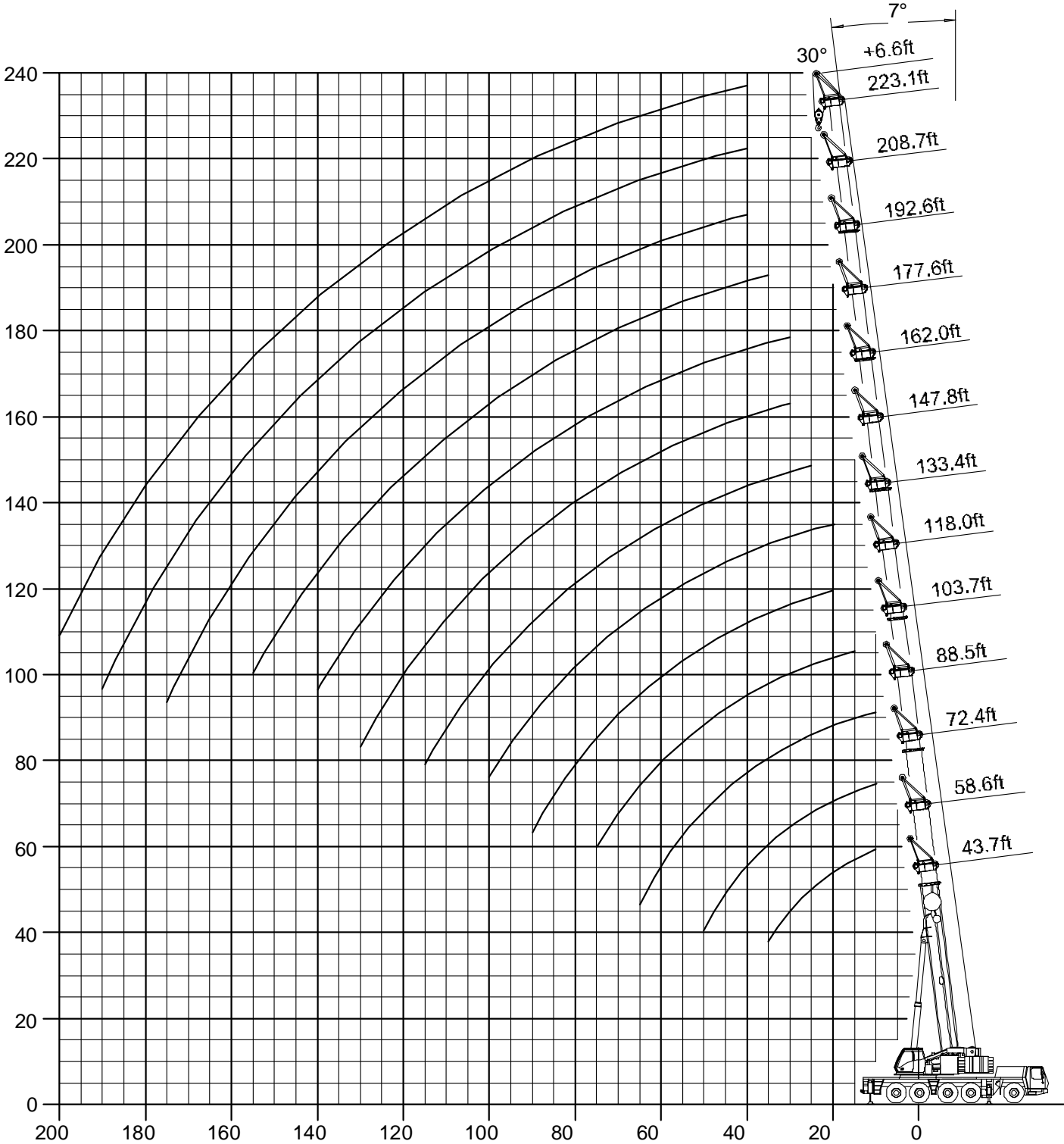
# Heavy Duty Jib Range Diagram

(Deflection not shown)



# Heavy Duty Jib Range Diagram

(Deflection not shown)



**Heavy Duty Jib  
169,700 lb. Counterweight  
Outriggers Fully Extended  
360°**

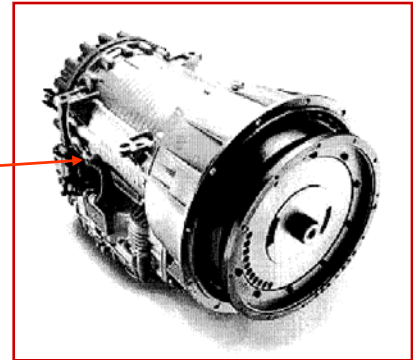
Boom Length + Heavy Duty Jib Length											
Radius	43.7' + 6.6'		88.5' + 6.6'		133.4' + 6.6'		179' + 6.6'		223' + 6.6'		Radius
	0°	30°	0°	30°	0°	30°	0°	30°	0°	30°	
10		41.8									10
15		41.8		41.8							15
20		41.8		41.8							20
25	41.8	41.8		41.8		41.8					25
30	41.8	41.8		41.8		41.8					30
35	41.8	41.8		41.8		41.8		41.8			35
40				41.8		41.8		41.8		25.0	40
45				41.8		41.8		41.8		25.0	45
50			41.8	41.8		41.8		41.8		25.0	50
55			41.8	41.8		41.8		41.8		25.0	55
60			41.8	41.8		41.8		41.8		25.0	60
65			41.8	41.8		41.8		41.8		25.0	65
70			41.8	41.8		41.8		41.0		25.0	70
75			41.8	41.8	41.8	41.8		38.8		25.0	75
80					41.8	41.8		36.6		25.0	80
85					41.8	41.8		34.4		25.0	85
90					41.8	41.8		32.4		25.0	90
95					41.8	41.8		30.4		25.0	95
100					41.0	41.4	22.8	28.6		24.2	100
105					37.8	38.2	21.0	26.8		22.8	105
110					34.8	35.2	20.0	25.2		21.4	110
115					32.2	32.6	19.2	23.8		20.0	115
120					28.6		18.4	21.6		19.2	120
125							17.6	19.8		18.2	125
130							16.8	18.6		17.4	130
135							16.2	17.6		16.6	135
140							15.6	16.6		15.8	140
145							15.0	15.8		15.0	145
150							14.4	15.0		14.4	150
155							14.0	14.2		13.8	155
160							13.4			13.2	160
165							13.0			12.6	165
170							12.2			12.0	170
175										11.4	175
180										10.8	180
185										10.4	185
190										9.8	190
195										9.4	195
200										8.8	200

## GMK 5275 Features and Benefits



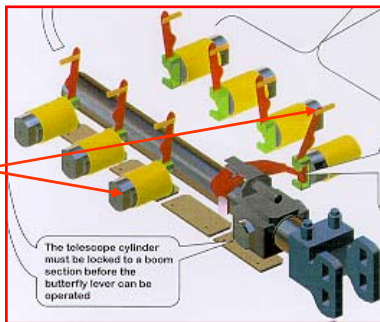
Cummins QSX15, chassis engine  
535 bhp (399 kW) @ 2100 rpm  
1873 ft./lb. torque (2539 Nm) @ 1400 rpm

Allison HD 4060  
6 speeds fwd, 1 rev



### TWIN-LOCK

Boom pinning mechanism automatically pins the sections in position using two horizontal large diameter boom pins



### LUFFING BI-FOLD SWINGAWAY

Hydraulically offset lattice bi-fold swingaway lets the operator set the offset from 5°-40° while under load, from the superstructure cab



### MEGATRAK

Independent suspension and all wheel steer system allows wheels to remain on the ground at all times so stresses and weight are not continually transferred between axles

